

ART AUCTION



CELT
CORPUS OF
ELECTRONIC TEXTS

The CELT Art Auction, Friday June 23rd, 7pm.
University College Cork.

Foreword

For over ten years, CELT has been a pioneering and highly successful digital Internet site for Irish history, culture, and literature. It brings Irish literature and culture to a worldwide readership—from the sagas of ancient Ireland to the poetry of Goldsmith, the dramas of Wilde; from the Annals of the Four Masters to the leading political writers of the twentieth century. Its work meets the most rigorous standards and academic protocols.

Every day, 20,000 people read and download its texts. It is used in universities worldwide. Its texts support the research work of hundreds of scholars abroad, and are used by thousands of students. Over 6,000,000 people log on in search of Irish writers every year. Literally, CELT is bringing Ireland to the world.

CELT is housed by University College Cork, but is responsible for its own finance. A small number of individual undertakings have won research funding from Government, but CELT itself is entirely supported by private donations and its own fund-raising. It requires the support of those interested in Irish culture and Ireland's cultural standing worldwide to carry out its mission. In keeping with the long artistic tradition of patronage, CELT invites you to be a patron.

Donnchadh Ó Corráin
Academic Director

Introduction

Our culture is so natural to us that sometimes we forget how completely it shapes and envelops us and our perceptions. We are its product. But what if it were wiped out over night? No art; no stories; no memories.

Culture with all its dazzling facets—language and literature, arts and music, song and dance, customs and beliefs, practices, games—is with us birth to death. Like the air we breathe, we do not notice it until an encounter with another culture brings ours into sharp relief. Studying our own past, and understanding its transformations, promotes tolerance and enjoyment of other cultures. And we understand ourselves better.

Why is it that reading an old story leaves such a fresh and modern imprint on our mind? While they are rooted in their own epoch, great themes of literature are timeless, unfolding universal stories. We empathise, because they speak to us. Likewise, when enjoying music, art and architecture which are hundreds or thousands of years old, their universal, timeless humanity shines through multicoloured prisms, and enriches us. Whether the painter boldly strokes his canvas, or the scribe carefully copies a manuscript; they all describe, interpret, create, transmit the perceptions, impressions of the human mind.

When cultural transmission stops, the bridge is broken, the river stops flowing. The intellectual and spiritual life of a society is hacked at the roots. Future generations lose their past.

CELT presents a rich palette of true Irish literature and history—from the tales of the heroic warriors of the Táin, the parchment of early medieval saints' lives, through the colourful worlds of the medieval Irish sagas and romances, tapestries of the religious wars and turmoils of early modern Ireland, to the politics and literature of modern times. The great early lyricists, the finest writers of the middle ages sit beside Goldsmith, Wilde, Pearse, Collins, Connolly. CELT is the leading Irish Internet site, respected worldwide, used by hundreds of universities, by thousands of individuals every day.

The CELT Art Auction brings together impressions of Ireland's oldest and youngest living artists and is supported by neighbouring European painters. As with the greatest books of Ireland, now and in the past, art and literature go hand in hand, promoting and sustaining our bountiful cultural heritage. To continue its mission of bringing Irish culture to the world CELT requests your support.

Our culture is for all to enjoy. It takes time to create, to build upon, to conserve. We will be measured, not only by what we create, but by what we preserve as patrons of our present and our past.

Declan O'Connor

Declan O'Connor is native of Co. Tipperary. He began painting in 1990. His first works were concerned with portraiture depicting the Irish writers such as Yeats, Joyce, Beckett and Shaw. Sustaining a historical theme, he then turned his attention to the 1916 signatories in 1992. Over the years his style has developed. More recently he has moved towards landscapes, horse fairs and emotive moments of public gathering which are all depicted in his bright, vibrant palette. He is influenced by Rembrandt and Jack B. Yeats. He has consistently developed the fluidity of his own unique style while approaching the artistic standards of those who have influenced him.

Title of Piece: **Enticement**

Artist: **Declan O'Connor**

Medium: **Oil on Canvas**

Dimension: **30 X 30 inches**

Reserve Price: **1,300 euro**



Martin Finnin

Born in 1968, it is Martin Finnin's proud boast that he has dropped out of no less than three art schools in Dublin, Limerick and Cork! He spent some time traveling before returning to Cork in the mid-1990's to resume his career.

Although there can be no question of a direct influence, his work shares certain characteristics with that of Matt Lamb. Finnin's early work has built up a relief effect, which is often 3 dimensional. Coral sand, zinc powder, powder paints, fur, quail eggs, toy soldiers, even Monster Munches were all incorporated in Finnin's work.

More recent works seem to follow the same combination of complex surfaces and simple figures, but his work has been simplified to good effect making it stronger and less diffuse.

He has exhibited his work throughout the world including shows at the La Luicemica Gallery, Mexico and the Lost Boys Coffee Shop, Magyamstradd Harlem, Holland. He has had several exhibitions throughout the country including the Jo Rain Gallery in Temple Bar, Dublin and The Big Picture Printmakers Gallery in Limerick. Cork exhibitions include "Spinoza"

Blackcombe, Cork, "Forest of Banquets" Tigh Fíli Gallery, Cork, and "A Subtle Consolation of Existence", Vangard Gallery, Cork.

His work is exhibited University College Cork, Spazio Tiempo Gallery, Florence, Italy, The Permanent Collection, Crawford Mini Arts Collection, Dept. of Foreign Affairs, Dublin, Vermont Studio Centre, Vermont USA, and the Cork Opera House.

Title of Piece: **Watercolour 57**

Artist: **Martin Finnin**

Medium: **Watercolour**

Dimension: **13 X 5 cm**

Reserve Price: **2,000 euro**



JP Rooney

In the last few years, the previously unknown JP Rooney has so captivated the hearts of art collectors in his native Ireland that he has become one of the country's best selling artists. Rooney's work was first launched in November 1997 with a sell out show.

Since then his work has been sold to collectors on all corners of the earth. He is well priced in a buoyant market that currently seeks new heroes and fresh investment opportunities and has entered centre stage at a time when Irish Art is in the ascendancy. Rooney's work has grown in confidence over the last few years.

It is looser, bolder, more directly narrative and has greater dramatic content than its more abstract predecessors. It has become more detailed, as his figures move increasingly into the foreground and assumes ever-greater depths of humanity. His palette is more venturesome, his brush strokes more authoritative and his compositions more assured. His themes are universal.

He depicts human relationships, located within their physical and social environments. Collectors have queued to buy his works and gallery owners have formed waiting lists to host exhibitions. Publishing houses have made repeated offers to issue his work in a variety of formats.

Title of Piece: **The Journey People**

Artist: **JP Rooney**

Medium: **Oil on Canvas**

Dimension: **24 X 32 inches**

Reserve Price: **1,400 euro**



Sue McNeill

Sue McNeill was born in Belfast. She obtained a Diploma of Art from the Dublin College of Art in 1974 and pursued postgraduate study with Kenneth Webb and the Irish School of Landscape Painting. Her work has been exhibited with many galleries on the island of Ireland including the James Gallery, Dublin, the Migil Gallery, Dublin, Gormley's Fine Art Gallery in Dublin, Belfast and Omagh, the Bold Gallery and the Kenny Gallery in Galway and Solo Arte in Waterford.

She has been awarded a two-week residence course at Tyrone Guthie Centre and was invited by the Women's Painters of Washington, to exhibit in a Millennium exhibition in Seattle.

Her representation of Ireland's bog landscape is as rare and unique as the Irish boglands themselves. The palette and form of this piece belongs exclusively to Sue McNeill's individual style.

Title of Piece: **Ballynahinch Landscape**

Artist: **Sue McNeill**
Medium: **Oil on canvas**
Dimension: **30 X 20 inches**
Reserve Price: **1,800 euro**



Joan Webb

Joan Webb is a traditional watercolourist. She allows the inherent light of the white page to shine through the delicate washes of transparent pigment. In this way she achieves remarkably delicate effects of light and shades of colour. In recent years, her palette has become more positive, resulting in a general strengthening of her personal and highly identifiable style.

Joan has exhibited widely in The Royal West of England Academy, The Royal Institute of Painters in Watercolour, The Royal Hibernian Academy, the Bankside Gallery, and various galleries in Devon.

Growing up in the forest of Dean with those wonderful natural surroundings has given her a lifelong interest in landscape. She is at home in the woods, and her paintings of trees are beautifully observed. Working from her house in Clifden has enabled her to study the

rugged coastline with a series of rock and harbour studies. Springtime invariably means renewed interest in the wildflowers on Connemara, and the remarkable variety of plants and shrubs in her garden there. She has had a deep fascination with the wild boglands near her home, and has, in recent years, painted a series of paintings of autumn bog studies showing the rich and wonderful colours which transform the landscape before the advent of winter. This piece conveys the artist's joy in the image of changing Connemara.

Title of Piece: **The Rocky Stream**

Artist: **Joan Webb**

Medium: **Watercolour**

Dimension: **11 X 18 inches**

Reserve Price: **700 euro**



Patrick Cashin

Patrick Cashin was born in Manhattan, New York, in 1965. He grew up in Cork City, Ireland, and after having lived and worked in Boston, London and Madrid, he returned to Cork where he has worked as a full-time artist for the past eight years. Regarded as one of the most promising artists of the new generation working in Ireland, he has had 12 solo exhibitions to date and his work has been exhibited and collected in Europe, Japan, U.S.A and Australia.

Most recently, his paintings featured in the R.H.A. annual summer show and also The James Adams contemporary and modern art sale August 2003. His work has been exhibited in numerous Cork city locations: The Lavitt Gallery, The Triskel Arts Centre, Gallery 44, and The People's Gallery, and also from having had his work included at auction in Cork at Morgan O'Driscoll Auctioneers.

The painting included here for the CELT benefit auction is very much representative of Patrick's current work. Often described as being defined by their clear light, quietness and sense of reminiscence, his paintings of the sea and the Irish coast are the paintings for which the artist is particularly noted, and which best reflect his mature style.

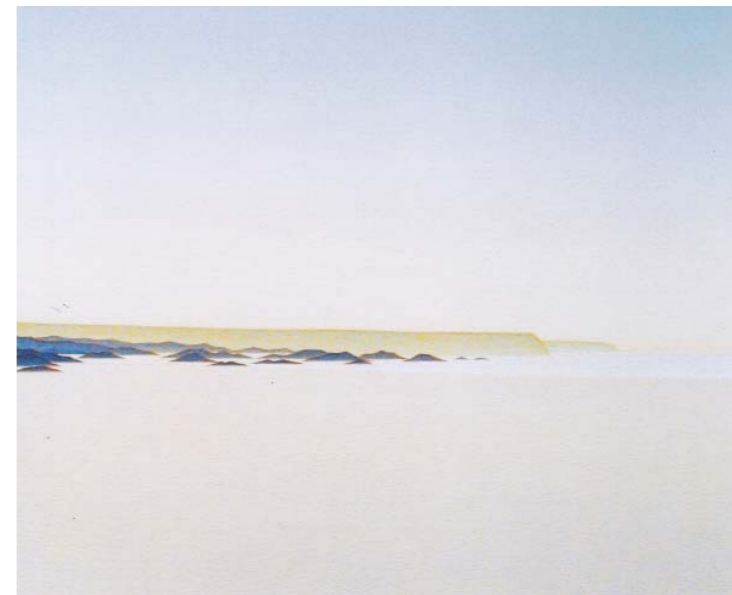
Title of Piece: **By the Sea**

Artist: **Patrick Cashin**

Medium: **Oil on Canvas**

Dimension: **40 X 50 cm**

Reserve Price: **1,250 euro**



Bill Griffin

Bill Griffin was born in Cork in 1947. Self-taught, he started working as an artist in London in the mid—1960's with limited critical and practically no commercial success. In 1971 he relented to the financial impasse of existing on the proceeds of his art and went to work in the oilfields. Within a few years he reached a successful level in that profession that provided the necessary support to pursue his love and passion for painting. He abandoned his career in the oilfields and returned to being a full-time painter.

He held his first solo exhibition to high critical acclaim in St. Finbarre's Cathedral in Cork in 2000. Since then he has had eight solo exhibitions including the Cork Opera House and the Vanguard Gallery, Cork in 2001. He has participated in numerous group shows including two exhibitions in the Crawford Art Gallery.

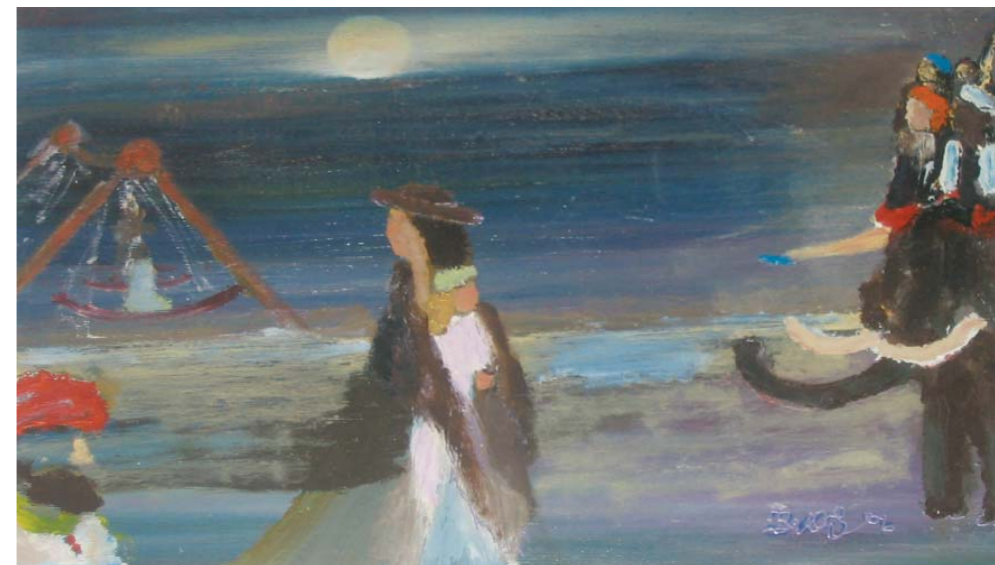
Title of Piece: **Swings and Elephants**

Artist: **Bill Griffin**

Medium: **Oil on Canvas**

Dimension: **39 X 31 inches**

Reserve Price: **2,500 euro**



Arthur Karl Maderson

Arthur Karl Maderson was born in London in 1942. He studied Fine Art for five years at Camberwell, South London, where amongst the teaching staff were such distinguished artists as Frank Auerbach, Ron Kitai and Patrick Procter. During his graduation year he won the Anna Berry Award at the South London Gallery, in open competition with other graduate art students throughout London.

A prolific and dedicated painter, he refused to exhibit publicly until 1982, choosing instead to destroy most of his work. From 1982 all his exhibitions have been sold out, often at private viewings.

He now divides his working life between Cappoquin, Co Waterford, in the beautiful Blackwater Valley and the Cevenne, South of France, where he lives in splendid isolation in a largely unpopulated area on the slopes of Mount Aigoul.

He now enjoys an established reputation as being amongst the strongest figurative painters working in Ireland, with his work highly sought after and commanding increasingly high prices in both galleries and at auction. He will freely admit that his working pattern is intense, daily and embodies a 'pathological

element'! In a recent conversation he explains that he sees his task as one of responding in a robust, passionate, yet hopefully sensitive manner, not to the separateness of objects but to the complex ambiguous richness of what he refers to as 'raw, visual information', and is happy to stand or fall with the central thrust of his ideology. In this, he is both single-minded and focussed on resolving questions that are physiological, psychological, and perceptual in essence, refusing to underestimate the visual intelligence of the spectator, who plays a major role in the process of understanding.

Title of Piece: **Mas Fadat, Cevenne, France**

Artist: **Arthur Karl Maderson**

Dimension: **120 X 81.5 cm**

Year: **2006**

Reserve Price: **5,000 euro**



Kenneth Webb

Kenneth Webb will turn eighty next year. He has painted all of his life and has produced an outstanding corpus of work. He is perhaps most noted for his use of colour in an all-embracing experience that pervades the whole of the painting. As a student, colour made a deep impact on Kenneth — colour in nature and in natural forms, the form itself being of less interest. Since those early days he has been experimenting with his own free romantic ideas and concepts, using direct colour in a subjective expressionist manner. Throughout his career, Kenneth has been fascinated by a variety of themes which he processes by painting his way out of them. "Whenever I am taken by a theme, I seem to have to start all over and invent my own pictorial structure". His work is deeply personal, evocative of his remarkable garden in Connemara, and of the blanket bog around his home there. He relays the deep impression of the countryside around him through thematic works of wild flowers, pools, rocks and turf banks, bringing forth the textures, shapes and moods of an ever-changing landscape. There is a real sense of place about his work, a sense of the most subtle aspects of Ireland's magical and mysterious landscape fused with sensuality and colour. John O'Donohue has written of the artist Kenneth

Webb. "In our post-modern era, where so much of life is reduced and commercialised through visual and aggressive image, it is healing for the eye and refreshing for the heart to encounter these paintings. If beauty is in the eyes of the beholder, then Kenneth Webb is a graced and gracious beholder". Kenneth has generously contributed two pieces of work in support of the CELT art auction.

Title of Piece: **Dark Pool**
Artist: **Kenneth Webb**
Medium: **Oil on Canvas**
Dimension: **20 X 30 inches**
Reserve Price: **13,000 euro**



Martin Finnin

Born in 1968, it is Martin Finnin's proud boast that he has dropped out of no less than three art schools in Dublin, Limerick and Cork. He spent some time traveling before returning to Cork in the mid-1990's to resume his career.

Although there can be no question of a direct influence, his work shares certain characteristics with that of Matt Lamb. Finnin's early work was built up a relief effect, which were often 3 dimensional. Coral sand, zinc powder, powder paints, fur, quail eggs, toy soldiers, even Monster Munches were all incorporated in Finnin's work.

More recent works seem to follow the same combination of complex surfaces and simple figures, but his work has been simplified to good effect making it stronger and less diffuse.

He has exhibited his work throughout the world including shows at the La Luicemica Gallery, Mexico and the Lost Boys Coffee Shop, Magyamstradd Harlem, Holland. He has had several exhibitions throughout the country including the Jo Rain Gallery in Temple Bar, Dublin and The Big Picture Printmakers Gallery in Limerick. Cork exhibitions include "Spinoza"

Blackcombe, Cork, "Forest of Banquets" Tigh Fíli Gallery, Cork, and "A Subtle Consolation of Existence", Vangard Gallery, Cork.

His work is exhibited University College Cork, Spazio Tiempo Gallery, Florence, Italy, The Permanent Collection, Crawford Mini Arts Collection, Dept. of Foreign Affairs, Dublin, Vermont Studio Centre, Vermont USA, and the Cork Opera House.

Title of Piece: **Another Door Opens**

Artist: **Martin Finnin**
Medium: **Oil on canvas**
Dimension: **98 X 69 cm**
Reserve Price: **6,000 euro**



Sarah Walker

Sarah Walker is a painter living and working on the Beara Peninsula, West Cork. Born in Dublin where she studied Fine Art at the National College of Art and Design, she moved to live permanently in Beara in 1991. Much of her work is based on the environment in which she lives and is the result of various travels to other remote areas of the world including India and Central America.

She has been exhibiting with the Hallward Gallery in Dublin since 1990 and the Fenton Gallery in Cork since 2000. She has exhibited in numerous selected shows around Ireland including EV+A and the Victor Treacy Award Exhibition. In 1994 Sarah Walker represented Ireland in the 26th Festival de la Peinture, Cagnes sur Mer, France. She has had two solo exhibitions with Galerie Orange, Helsingor, Denmark and took part in an exhibition with six other Irish artists in Boston University, USA in 1997.

She has received numerous awards from the Arts Council and the Cultural Relations committee to exhibit abroad and was awarded an artists residency for Sapporo International Art Park, Japan in 1988/89.

Her work is in public collections of the Contemporary Irish Art Society, AIB bank, the OPW, Department of Foreign Affairs, First National Building Society and Eircom.

Sarah has moved her own gallery and studio space to an old converted carriage house on the water in Castletownbere, Co Cork and continues her work there. She is currently working towards a solo exhibition at the Hallward Gallery, Dublin in November this year.

Title of Piece: **Wood Sedge**

Artist: **Sarah Walker**
Medium: **Oil on canvas**
Dimension: **20 X 50 cm**
Reserve Price: **1,400 euro**



Tony Lynch

Tony Lynch was born in Dublin in 1938 and has lived there all his life. Tony trained in graphic design and worked in the design business most of his life. He has been painting for the last twenty years and works in watercolour and oil with oil being his primary medium.

Tony's works frequently depict familiar Dublin street scenes. His ability to capture the atmosphere through the use of strong light and shade make Tony's work very desirable. He takes his influences from the American artist Edward Hopper and from the impressionist painters.

Title of Piece: **Sandymount Strand**

Artist: **Tony Lynch**

Medium: **Oil on Canvas**

Dimension: **16 X 20 inches**

Reserve Price: **1,800 euro**



Paddy Campbell

Born in Dublin 1942, Paddy was educated at Marlborough Street National School, Belvedere College, and Marian College, Ballsbridge, Dublin.

During the early sixties, he attended courses at the National College of Art, but his practical needs were directed towards the Culinary Arts, and he graduated in Hotel Management 1964.

Following a series of training stints in hotels in Ireland, London, and Sweden, he returned to Ireland to start his own catering business in 1967.

He continued to develop his painting skills during the seventies and eighties. From the mid-nineties he resumed evening and other short courses at N.C.A.D. and began to realise that Art was his true vocation. Summer courses at the Florence Academy of Art, allowed Paddy to develop his skills at drawing and painting in the tradition of the Renaissance Painters for protracted periods in the six years from 1997 to 2002 inclusive. He moved into his own studio space in 1999, and resigned from his full-time business activities.

In recent years he began to explore sculpture to help his understanding of form, only to discover a new passion.

His work has been shown at various exhibitions such as Oireachtas and National College of Ireland and NCAD where he won the Miller Prize for painting in 2002. Paddy's sculptures have been exhibited at the R.H.A. and are included in a number of collections both private and public in Ireland and abroad.

Title of Piece: **Head Portrait of Jade**

Artist: **Paddy Campbell**

Dimension: **19 X 10 inches**

Reserve Price: **3,000 euro**



Guggi

It is perhaps inevitable that Guggi's friendship with Bono, Ireland's most acclaimed rock star, with whom he grew up, has generated more publicity than the work of the leading artist himself. Such is life.

Guggi was born in 1959 and began his painting career in 1986. Minimalistic representations of urns, bowls and vessels are his trademark.

At the end of the millennium, Guggi began work for an exhibition in the renowned Tony Shafrazi Gallery, New York. The exhibition, famed for exhibiting artists such as Andy Warhol and Jean-Michael Basquait, took place in June 2001. The opening was a huge success, a complete sell out. The launch was attended by New York's elite including Christy Turlington, Michael Stipe, Moby, Jeff Koons, Francesco Clementi and Scotland's Ewan McGregor.

After New York, Guggi spent the next six months working on many commissions including a permanent installation for Beacon Court in Sandyford, Co. Dublin. John Rocha designed the interior and invited Guggi to create an installation for the main area of the building. For the first time Guggi put together a three-dimensional work featuring his trademark vessels and bowls in various sizes, textures and colours. On completion he began to work on his collection for the 2002 exhibition at the Solomon Gallery.

Guggi's work is in many collections throughout the world and is much sought after for its stylish and aesthetic subtlety. He currently lives in Dublin with his wife Sibylle and their four children.

Over leaf is an illustration a piece entitled 1/05 from the Bowls and Squares collection, which belongs to the same suite of the piece being auctioned this evening. This collection is not available through galleries.

Title of Piece: **Bowls on Squares 1/06**

Artist: Guggi
Medium: Oil on canvas board
Dimension: 75 X 100 cm
Reserve Price: 3,200 euro



Prof. Franz Lettner

Franz Lettner has been described as “Visionary, mystic and experimentalist of the Austrian modern age in the 20th century “. He is the exception of all artists contributing to the CELT Art Auction catalogue, for he is no longer with us.

'The Village' has been generously donated by the Solo Arte Gallery in Waterford, in remembrance of the great cultural heritage which we have inherited from those who have come before us. Preserving the works of those who have come before us is of paramount importance to the CELT Project.

Lettner's work was strongly influenced by literature, especially by works of those poets and writers who — like himself — looked into the profound questions of human existence, e.g. Dante, Baudelaire, Cervantes, E.T.A. Hoffmann. He practically illustrated their words in the form of art works which emotionally corresponded to the poets.

His works of his first great creative period “ Beginning and Centre of my Painting “ until 1959 still reflect his experiences of the war which he represents in a powerful expressionist style often showing pessimistic characteristics and the feeling of a silent resignation. However, this changes after his study trip to North Africa where he intensifies his perception of colour.

His second great creative period (1960—1965) is called the “Orphic World”. In this period he works without associative suggestion and objective relation and the image of man entirely gives way to an illusionary room. With vital and tempestuous enthusiasm Lettner reveals wishes, desires and fears.

His works are light, clear and diaphanous. He creates expressions, a real world translated into art, paintings of youthful freshness and directness. The alert eye will become apparent that his work is of outstanding artistic quality and come from deep in his heart.

Title of Piece: **The Village**

Artist: **Prof. Franz Lettner**

Medium: **Acrylic**

Dimension: **47 X 68 cm**

Reserve Price: **10,000 euro**



Lorraine Mullins

Lorraine Mullins received her degree and post grad in Fine Art from the Crawford College of Art and Design, Cork, Ireland. In 1999 she won the Cork Arts Society Student of the Year and since then has exhibited in numerous solo and group exhibitions and has also received several commissions from both corporate and private clients. While Lorraine continues to paint from her studio in Cork, for the last two years she has also been immersed in both motherhood and in the design of glass panels with her partner Eoin Turner, with whom she owns and runs an architectural glass company.

Growing up in beautiful East Cork near the coastal village of Ballycotton, the sea and the land have always played a major role in influencing her work

She prefers to work on large scale pieces which allow her the freedom to move the paint across the surface in a physical manner. The rhythmic movement and texture of nature's continual changing elements form the basis for her bold and imposing canvases

Since her early emotionally charged paintings of the late 1990's, Lorraine's work has turned towards an examination and depiction of the world around her, exploring the traditions of painting through the genre of landscape. Photography is also an integral part of the process in generating her imagery. Her most recent paintings are explorations of landscape. While some of these paintings lean towards a more traditional landscape format, others explore the duality of nature. Sometimes turbulent canvases reflect nature's aggressive and destructive powers, while others emanate an atmosphere of stillness and emptiness, and transcend the genre of landscape painting.

Title of Piece: **Burning Bright II**

Artist: **Lorraine Mullins**

Medium: **Oil on canvas**

Dimension: **4 X 2 feet each**

Reserve Price: **2,000 euro**



John Schwatschke

John Schwatschke is an Irish—born (Dublin, 1943) portrait painter of Austro—Irish parents. His original ambition was to be a concert pianist and composer, and he gave three piano recitals of classical works and his own compositions in Waterford, Vevey and Tours. However, his friendship with the Irish President de Valera (whom he painted as Chancellor of the National University) after leaving school, led to the President persuading him to “do one thing and do it well”, which he thought should be art. Schwatschke took this advice and continued to record his works meticulously.

Meanwhile, his business career, after studying Architecture in Dublin, led to a management position in the Middle East, where he managed, as Project Manager, two Saudi—German joint ventures (SR15m and subsequently SR20m) , working for the King's banker at Jeddah. However, he maintained a studio in Provence (1970—1979) where he was a neighbour of Picasso in Mougins, and where Le Musée Schwatschke was later established for the benefit of the village of Valbonne. However, government restrictions prevented the project from being completed and it was built instead near the artist's home at Carlow (opened 1976 by the Austrian ambassador).

The artist returned to Ireland to look after his elderly parents in their final years, and in 1996 resumed painting full time. Since then, his caricature works have become very popular on the Irish and London fine art markets. In his formal academic portraiture the artist has been patronised by President de Valera of Ireland, Ingrid Bergman, Cyril Cusack, Noel Purcell, Prince Philip (the 1979 portrait), Archbishops Simms and McAdoon of Dublin, Robert Mitchum, Lúna Czechowska (Modigliani's model) and many others in Europe and USA. To date the artist has produced 1,800 paintings and bronze sculptures, all of which are recorded in the archives of Le Musée Schwatschke.

Title of Piece: **Wharfingers**

Artist: **John Schwatschke**

Medium: **Oil on canvas**

Dimension: **20 X 50 cm**

Reserve Price: **3,000 euros**



Clare Cryan

Clare Cryan was born in Dublin, and educated in Sion Hill, and subsequently at the National College of Art, and the Belfast College of Art. She was appointed as Master of the Preliminary School of the National College of Art, and worked there for four years before resigning to develop her own work.

In 1971, she founded the Blue Door Studio in Ballsbridge, and since then has become one of this country's most noted art teachers, with many of her students making a significant contribution to Irish painting.

She held her first solo show in Belfast, and since then has had many solo exhibitions in Wexford, Dublin, in England and Galway. Her work has featured regularly in the R.H.A., the R.U.A. and the Oireachtas exhibitions in Ireland, and many such exhibitions in the U.K. In 1987, she was elected a Member of the European Institute of Watercolours, and since then has exhibited in Brussels, Paris, Antwerp, The Hague, and Luxembourg. For several years she represented Ireland at the Festival International Paris—Osaka Exhibition, which toured Japan. She was also invited to show in the Salon Hong Kong.

Clare Cryan is modest about her work, but her technical brilliance, her original ideas, her poetic renderings and sensitive interpretations have resulted in many successes, at home and abroad.

All of the traditional nuances, values and technical demands are evident in abundance in her work — landscape, still life, floral and figurative.

Title of Piece: **Yellow Bouque**

Artist: **Clare Cryan**

Medium: **Oil on canvas**

Dimension: **20 X 16 inches**

Reserve Price: **1,800 euro**



Carol Ann Waldron

Carol Ann Waldron was born in Dublin in 1948. She is the eldest child of Jack and Mary Hughes. She spent her childhood and early years in the County Wexford village of Oulant, where her father was the local Garda Sergeant.

Subsequently her family moved to Greystones, County Wicklow and it is here that Carol Ann now lives with her husband Niall and their four children.

Never having had the opportunity to study art at school, Carol Ann always had a keen interest and love of art and spent many years observing, dreaming and creating in her mind the scenes and images she commits to canvas today.

She is mainly self-taught. Having learned the basic techniques, she is of the opinion that creativity is either present or not and that talent cannot be taught — it can be nurtured and nourished, but definitely not taught!

Since 1988 she has been painting, exhibiting and selling her work. Originally working in pencil, she quickly moved to acrylic, pastel, watercolour and then onto oil, oil being her primary medium.

Although changing and developing all the time, her theme is always one of colour, light and atmosphere. Without these three elements, she considers a painting of value cannot exist. By committing her dreams and unwritten poetry to canvas, she endeavours to lift the heart and touch the soul of the viewer. Hopefully on viewing her work you find your soul being uplifted in the continuous enjoyment of her work. She is quickly establishing herself as one of Ireland's emerging artists.

Title of piece: **Skywards**

Artist: **Carol Ann Waldron**

Medium: **Oil**

Dimension: **40 X 20 inches**

Reserve Price: **3,400 euro**



Elisabeth Bauerstein

Elisabeth Bauer is one of two Austrian artists contributing to the CELT Auction in support of the preservation of Ireland's written cultural heritage. We are exceptionally fortunate to exhibit her work for auction this evening, as it is increasingly difficult to come by, even in her native home of Austria. Born in Innsbruck 1933, she studied in Vienna at the Academy of Applied Arts and Academy of Graphic Arts. Over the course of her long career she has received numerous prestigious awards; the Fuller Fabrics 1954 International Competition Prize in New York, the Theodor-Kowrner Prize in 1959 and the city of Innsbruck prize 1966.

Public and private commissions for large murals, purchases by numerous museums and collections, exhibitions and participation in exhibitions in Austria, Germany, Switzerland, Canada, USA, Italy, Egypt and Belgium. She received an honorary doctorate 1986.

Dr. Franz Hoelbing of Innsbruck, Austria describes the work of Bauerstein;

"There are no half-measures in these paintings, the spellbinding femininity in the form of an undefeated sensitivity, the loving permeation of the works by a microcosm that is new to her and the resulting overwhelming ecstasy of colour".

Title of Piece: **Fire Flowers**

Artist: **Elisabeth Bauerstein**
Medium: **Egg Tempura on an Acrylic Background on Wood**

Dimension: **48 X 24 inches**
Reserve Price: **8,000 euro**



Kenneth Webb

Kenneth Webb will turn eighty next year. He has painted all of his life and has produced an outstanding corpus of work. He is perhaps most noted for his use of colour in an all-embracing experience that pervades the whole of the painting. As a student, colour made a deep impact on Kenneth — colour in nature and in natural forms, the form itself being of less interest. Since those early days he has been experimenting with his own free romantic ideas and concepts, using direct colour in a subjective expressionist manner.

Throughout his career, Kenneth has been fascinated by a variety of themes which he processes by painting his way out of them. "Whenever I am taken by a theme, I seem to have to start all over and invent my own pictorial structure". His work is deeply personal, evocative of his remarkable garden in Connemara, and of the blanket bog around his home there. He relays the deep impression of the countryside around him through thematic works of wild flowers, pools, rocks and turf banks, bringing forth the textures, shapes and moods of an ever-changing landscape. There is a real sense of place about his work, a sense of the most subtle aspects of Ireland's magical and mysterious landscape fused with sensuality and colour.

John O'Donohue has written of the artist Kenneth Webb. "In our post—modern era, where so much of life is reduced and commercialised through visual and aggressive image, it is healing for the eye and refreshing for the heart to encounter these paintings. If beauty is in the eyes of the beholder, then Kenneth Webb is a graced and gracious beholder".

Kenneth has generously contributed two pieces of work in support of the CELT art auction.

Title of Piece: **Lus Na Greinne'**

Artist: **Kenneth Webb**

Medium: **Oil on Canvas**

Dimension: **30 X 40 inches**

Reserve Price: **15,000 euro**



Ciaran Crowley

Ciaran Crowley was born in Dublin in 1978 and graduated in design communications from D.L.I.A.D.T in 2000. After a spell living and working in New York he returned to Dublin in 2001 and went on to specialise in animated visuals with Dublin based design collective Delicious 9 for four years; working on short films, theatre and music videos that have been previewed throughout Europe, Canada, The U.S and Japan.

After discovering that paint and brushes won't crash like computers do, Ciaran took part in a number of group exhibitions at the Metatron Gallery in Wicklow in 2004/05; and has since turned his attention to figurative painting. Having just completed a solo exhibition in The Stone Gallery in Dublin, Ciaran has committed himself to discovering the finer points of paint; and puts both his thumbs up to artists such as Shaun Fergusson, Colin Davidson, Lucien Freud and others for continuing to produce highly influential work in what is now a media—saturated artistic environment. Ciaran's primary focus is simple; specialising on the individual, he is fascinated by the portrayals and interpretations given and displayed through the typical behaviour of one person in any given situation. Ten years of part time barwork can do that to a man.

Title of Piece: **Creative Process**

Artist: **Ciaran Crowley**

Medium: **Oil on Board**

Dimension: **48 X 24 inches**

Reserve Price: **2,800 euro**



Michael Smyth

A Belfast born painter and sculptor, Michael is one of Ireland's most exciting artists. His inspiration comes from everyday events and experiences in life, from childhood to the present day. Smyth's paintings and sculptures capture the essence and personality of the subject matter, whatever it may be, with great warmth, honesty and humour.

"Michael Smyth has this ability to be personally involved in his subjects without sacrificing painting for mere illustration". Basil Blackshaw

Many of his works are sparse compositions "in which the centrally placed image is surrounded by vigorous brushwork that defines no space, no specific location... . They are a rapid, emotional response to things seen, events experienced, memories encapsulated in a few expressive brushstrokes. Smyth works quickly and instinctively, heightening the essential and excluding the superfluous". Amanda Croft

His work has gained the stamp of approval from the Royal Ulster Academy, where he was awarded the prestigious Eakin Prize for 'the most outstanding still life'. Michael's work is held in major public and private collections including the Ulster Bank Collection and the private collection of Joanna Lumley.

Title of Piece: **A Delicate Flower**

Artist: **Michael Smyth**

Medium: **Oil**

Dimension: **40 X 30 inches**

Reserve Price: **5,500 euro**



Pauline Bewick

Dr. James White, former Director of the National Gallery of Ireland, has described Pauline Bewick as "one of Ireland's most enchanting contemporary artists, her best pictures combine a lyrical flow of line with a brilliant handling of light." Her art is generally observed to breathe freedom and movement. She herself is a free spirit and her open philosophy has its roots in an unconventional childhood which was spent travelling around England and Ireland, living in houseboats and caravans.

Now seventy years of age, Bewick has produced and continues to produce a great body of work. Her mother, Harry, had the foresight to preserve her early works, 600 of which constitute her Seven Ages Exhibition that represents the various ages of any woman's life — from childhood, school, adolescence, through work, motherhood, travel, and maturing years. Four hundred works have been gifted by the artist to the State, which consists of two collections, one to be housed at the Walton Building, Waterford Institute of Technology and the second to be housed in the County Council Offices in Killorglin, Co. Kerry. The remaining two hundred works will be known as the traveling collection to promote Pauline Bewick on an international level and in turn highlight the two permanent collections in Kerry and Waterford.

Pauline Bewick is perhaps unique amongst Irish artists, having access to her entire lifetime in pictorial and other artistic formats. Following a prolific career from childhood upwards, her vivid paintings are featured in galleries and collections worldwide.

Quince No. 2 was inspired by a purchase at a local garden nursery. As soon as the artist saw the Quince tree she immediately recognized that it would become a painting. The tree preempts spring as it flowers early. Pauline took the tree into her studio, and despite the army of ants interested in the Quince pot, she painted her first two paintings of the Quince Tree. The piece being auctioned this evening is the second of these two paintings. The artist intends to paint the same subject matter annually, observing through her own individual style the growth, flowering and beckoning of spring through the young Quince Tree.

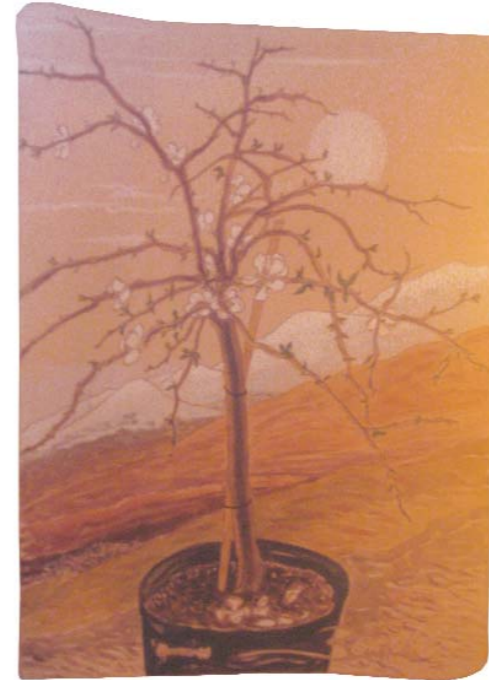
Title of Piece: **Quince No. 2**

Artist: **Pauline Bewick**

Medium: **Watercolour**

Dimension: **31 X 23 inches**

Reserve Price: **15,800 euro**



Claudio Viscardi

An Irish—Swiss artist, Claudio Viscardi is based on the Beara Peninsula in Co. Kerry.

Claudio exhibits throughout Ireland and internationally. His poetic, visionary and powerful works draw the observer into an extraordinary world. A subtle palette and refined technique assist a true individual in unravelling the secrets of a gifted imagination.

Claudio has captured the imagination of his many collectors worldwide with his unique approach, combining traditional methods using rare and natural pigments and an innovative, instantly recognisable style.

Cararra marble and earth and mineral pigments combined in a semi-fresco technique, lead to a unique illuminous quality, itself a trademark of his art. Inspired by the surroundings of the Beara peninsula, the artist's re-occurring theme of day and night, presides in juxtaposition creating a subtle architecture through which the sections of the landscape are revealed in closer and intimate analysis. The figures indicate a classical reference reflecting the monumental nature of the landscape itself.

Title of Piece: **Peninsula Nightfall,
The disappearance of Midas**

Artist: **Claudio Viscardi**
Medium: **Earth & mineral pigments,
24 carat gold leaf,
mixed media on canvas**

Dimension: **100 X 100 X 5 cm**

Reserve Price: **5,000 euro**



notes



