



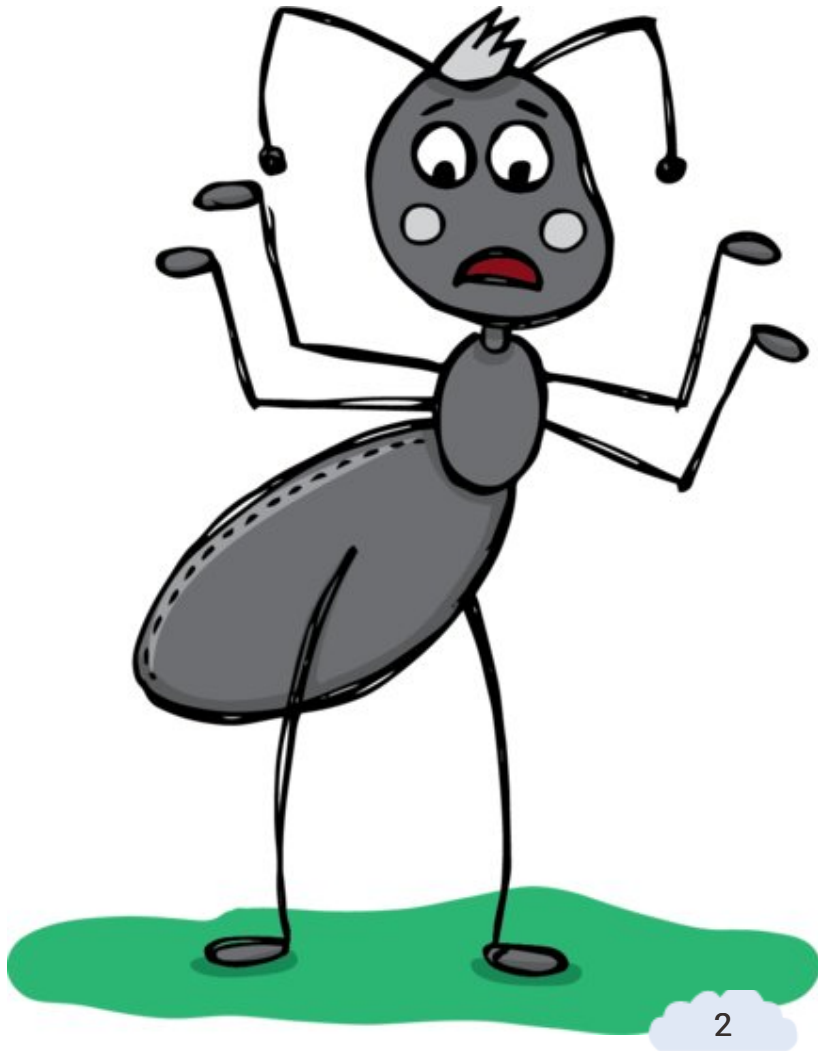
# Tshoswane o thusa Leeba

Kholeka Mabeta and Judith  
Baker  
Setswana



E ne e le letsatsi le le  
mogote mo sekgweng se  
se omeletseng.





Tshoswane o ne a nyorilwe  
thata. O ne a na le malatsi  
a sa nwe metsi.

“Ke tlhoka thoti fela ya metsi, le fa e ka wa mo setlhatsaneng.”





Le sona setlhatsana tota  
se ne se kgadile.

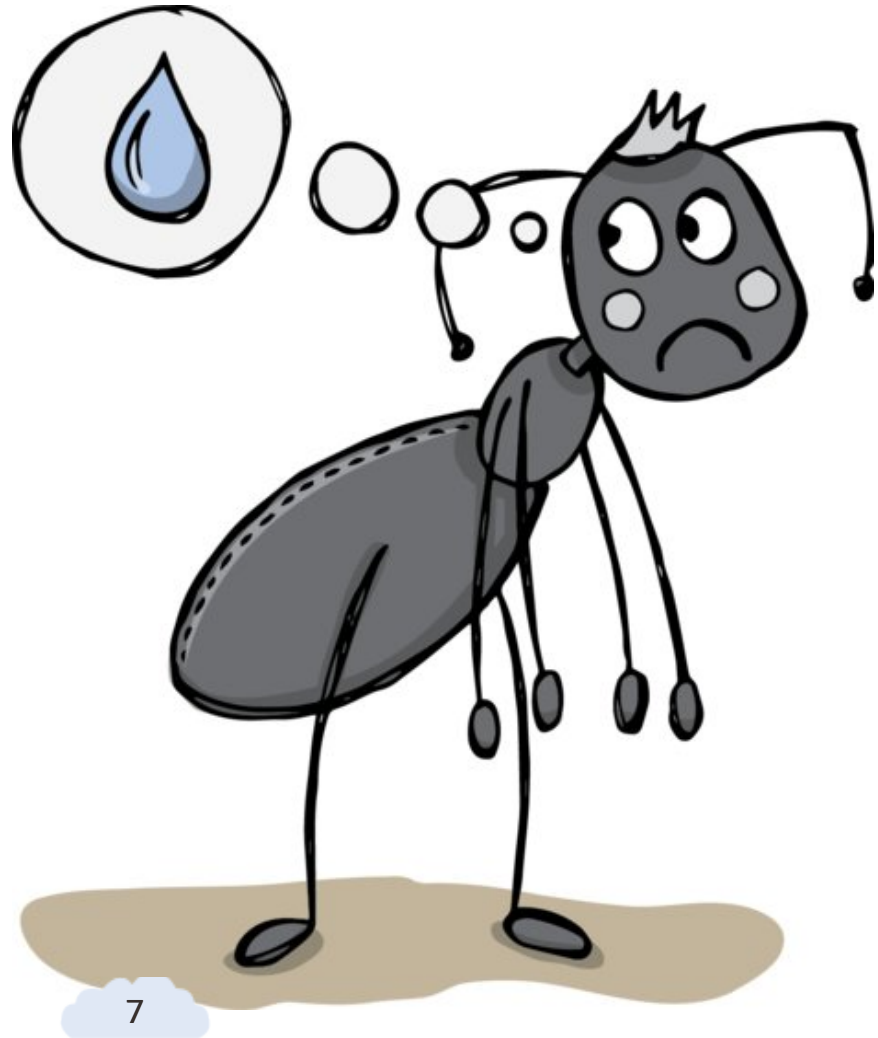
“Fa ke sa nwe metsi, ke tllile go swa,” Tshoswane a lela.  
“Ke tshwanetse go ya nokeng e ke e utlwaletseng.”



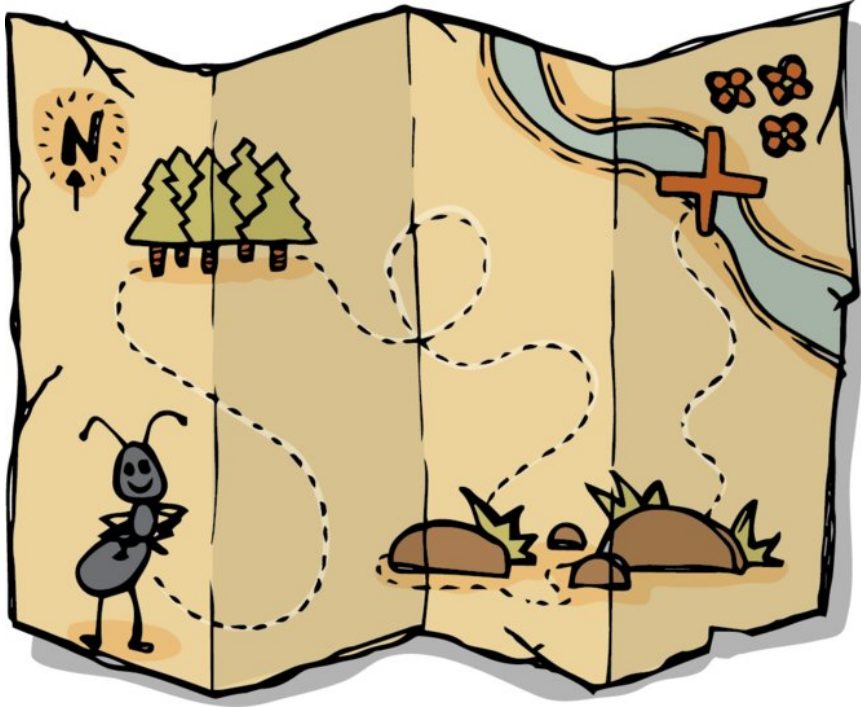


“Noka e tla tsamaya ka wena,” Moshe yo o bothale a mo thiba.

Fela Tshoswane o ne a  
nyorilwe thata.  
“Ke tlile go swa fa ke sa  
nwe metsi.”

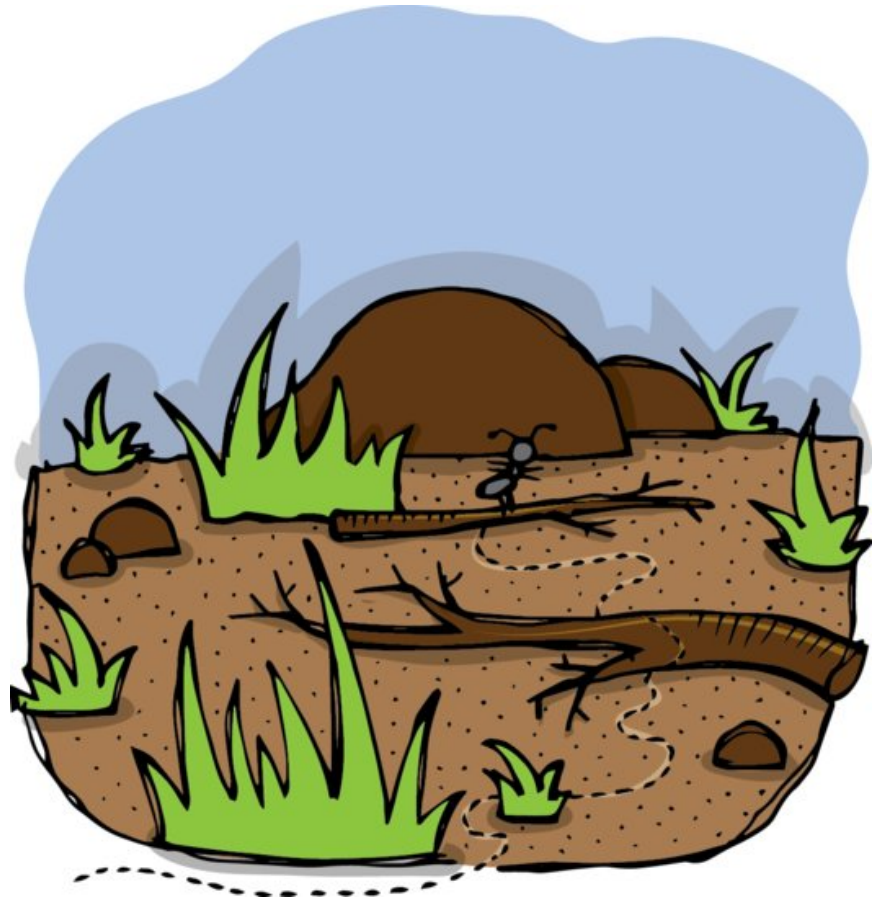






Tshoswane o ne a ya go  
batla noka...

go kgabaganya majang a a  
omileng le dikala tse di  
omeletsetseng...

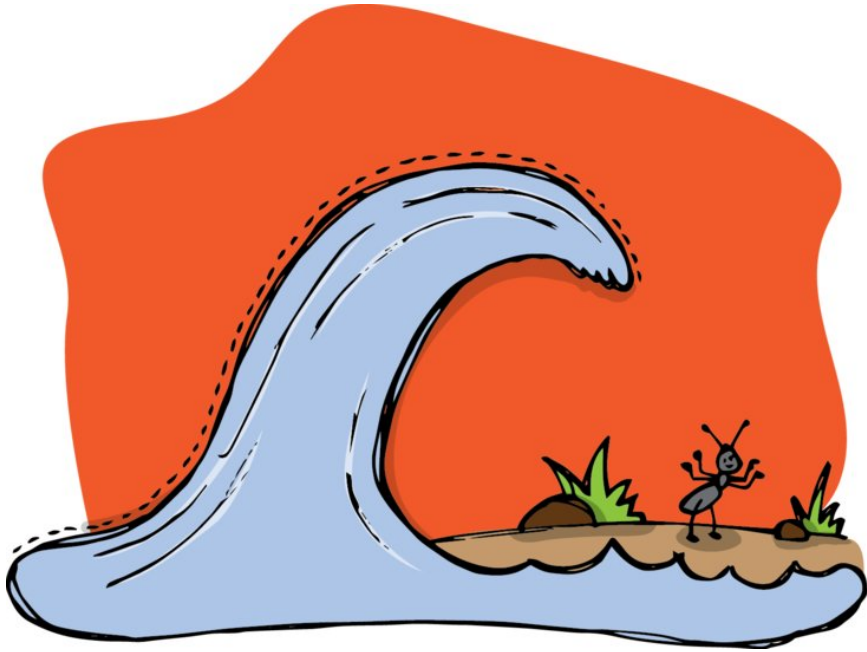




...go fitlhela a utlwa  
mosumo wa makhubu a  
metsi.

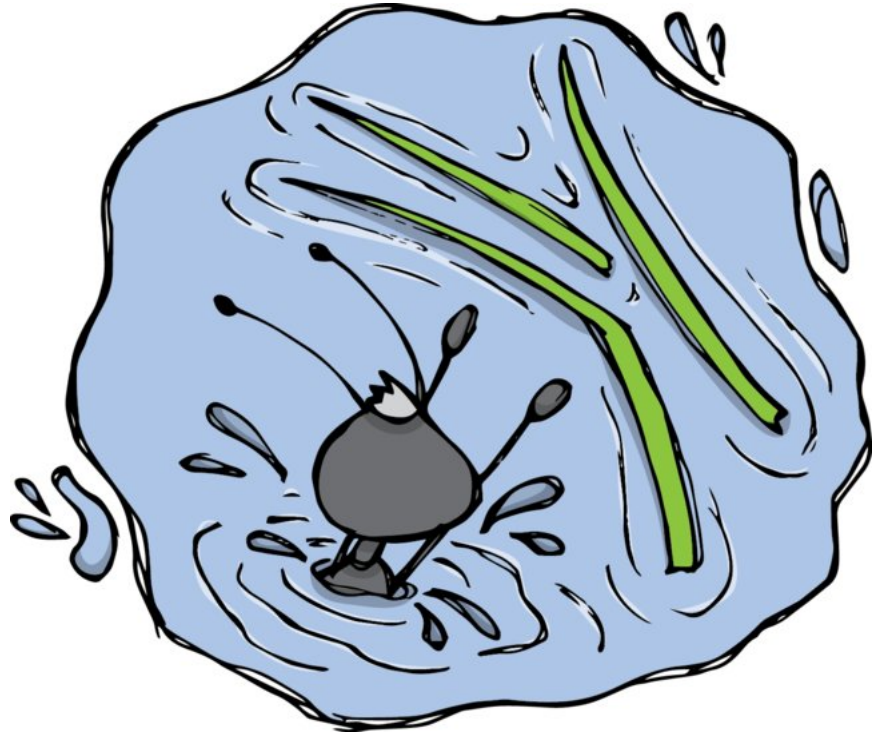
Tshoswane o ne a nwa  
metsi a a monate a a  
tsiditsana.





O ne a itumetse thata mme  
a se bone lekhubu le legolo  
la metsi le atamela.

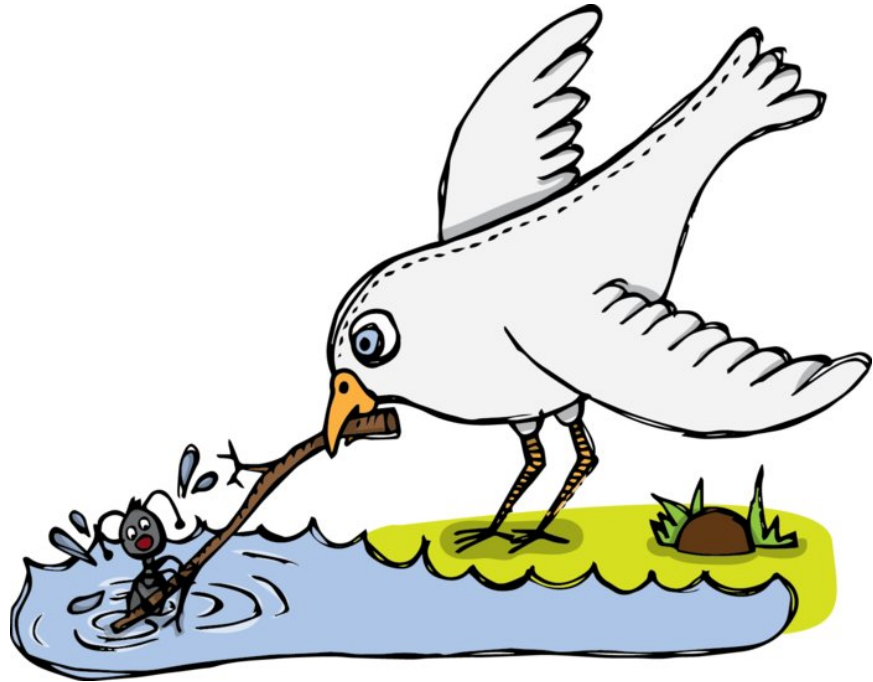
Tshoswane o ne a leka go  
itshwarelela ka bojang.  
Go le jalo metsi a feta ka  
ena.



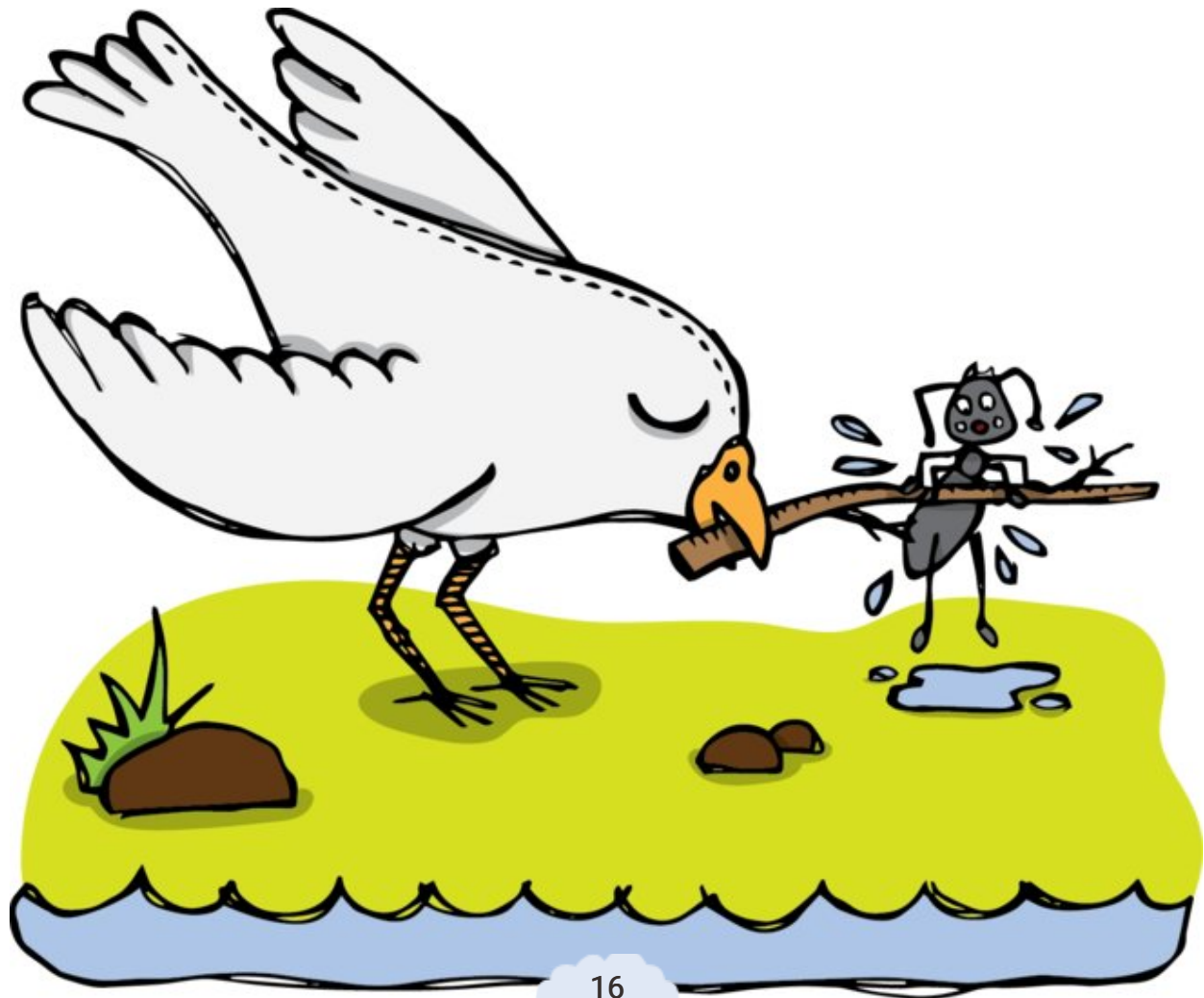


“Thusang! Thusang!”

“Ka bonako, palama,” ga  
bua Leeba le Lesweu, a  
tshwere kala mo  
molomomg wa gagwe.







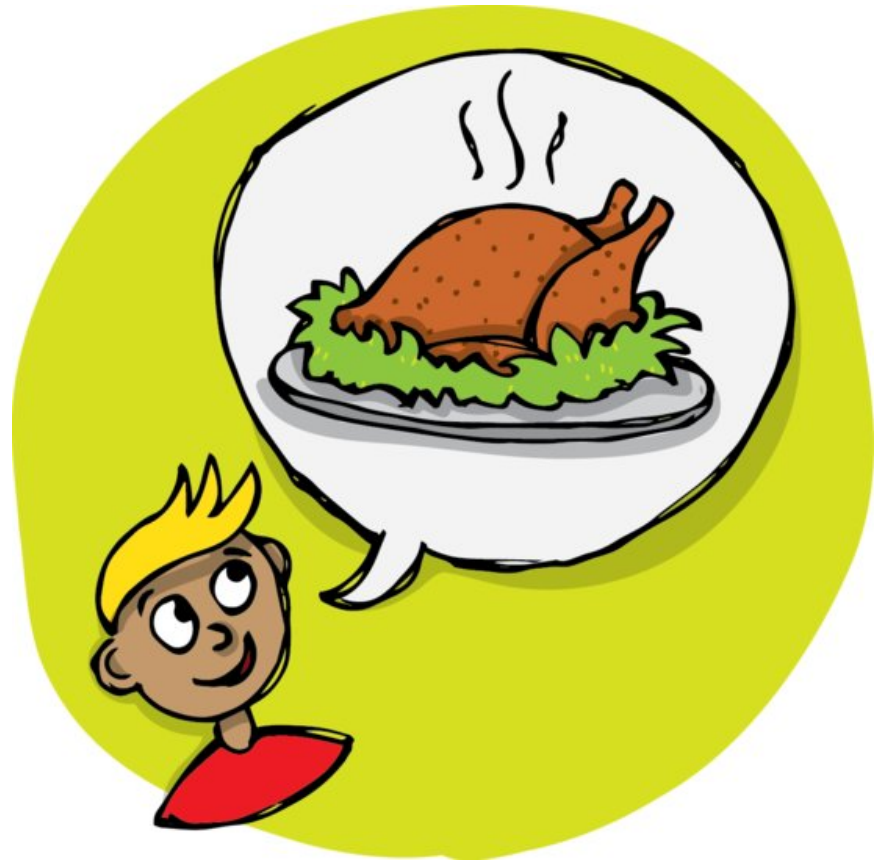


“Ga ke na go tsamaya ke  
ise ke leboge Leeba.  
Ke tla leta go fitlhela a tla  
go nwa metsi.”

Ka letsatsi lengwe fa a  
letile, basimane ba babedi  
ba ne ba tla kwa nokeng ba  
tshwere diragamaje.



“Go na le leeba le le tlang  
fano ka metlha go tla go  
nwa metsi,” ga bua  
mongwe wa basimane.  
“Re tla le dira nama ya rona  
ya go lalela gompieno.”





“Ga ke na go letla  
basimane ba go bolaya  
Leeba le Lesweu. Fela ke  
monnye, nka dira eng?”





Ka yone nako eo Leeba le  
Lesweu a fologa setlhare  
go ya go nwa metsi.







Tshoswane o ne a tlelwa ke kakanyo.

O ne a tlolela mo godimo  
ga leoto la mongwe wa  
basimane mme a mo  
tsenya meno ka kgatelelo.





Mosimane o ne a tlola.  
“Ijoo!” a lela.

Leeba le Lesweu o ne a tshoga mme a fofela kwa godimo.





Se e ne e le thuso ya ga  
Tshoswane go leboga  
Leeba le Lesweu ka a mo  
pholositse mo metsing.

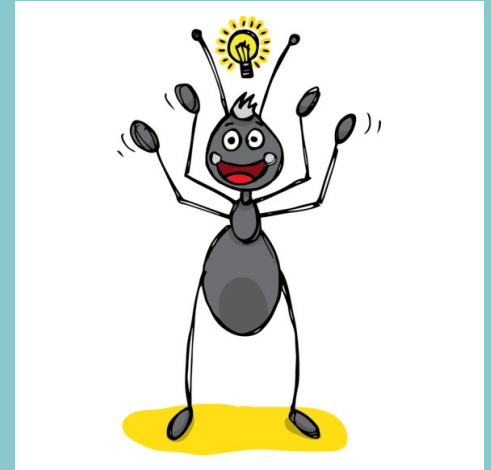
# Tshoswane o thusa Leeba

Writer: Kholeka Mabeta and Judith Baker

Illustration: Wiehan de Jager

Translated By: Lorato Trok

Language: Setswana



© African Storybook Initiative, 2014



This work is licensed under a Creative Commons Attribution  
(CC-BY) Version 3.0 Unported Licence

Disclaimer: You are free to download, copy, translate or adapt this story and use the illustrations as long as you attribute or credit the original author/s and illustrator/s.

**Saide**   
South African Institute  
for Distance Education

[www.africanstorybook.org](http://www.africanstorybook.org)  
A Saide Initiative